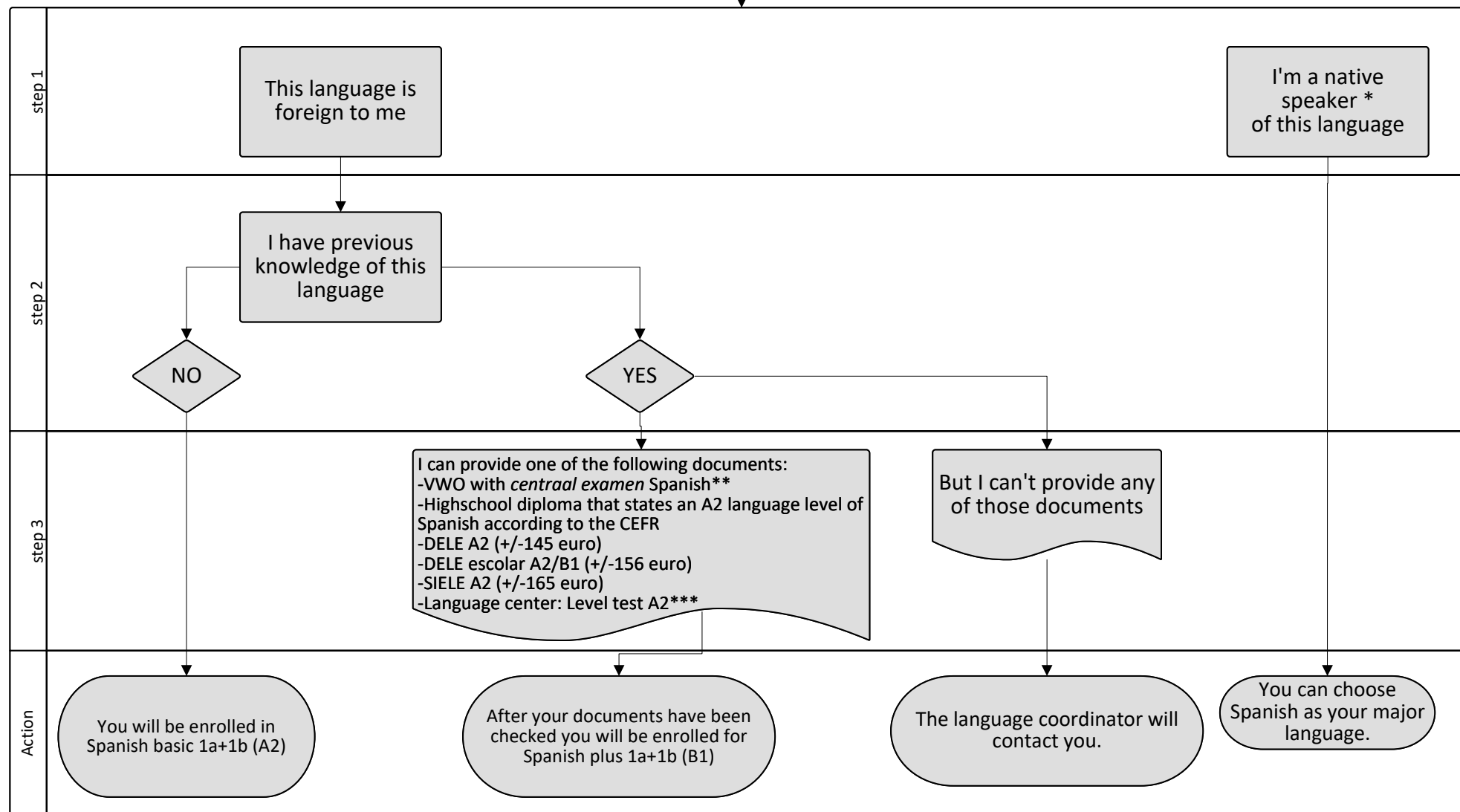


Spanish major A2 or B1 - 2023 2024 Semester 1



** If you have a VWO with *centraal examen* Spanish and you want to enrol for Spanish plus 1a+1b (B1), you will have to take an additional (oral production) test. If you wish to sign up, please let us know and we will further inform you.

*** Please note that if the student considers that s/he may have a higher level than A2 and, therefore, the student would like an exemption from one of the courses (e.g. Plus 1a or Plus 1a and 1b), the only way is by presenting a recent (less than one year old) DELE or SIELE certificate of the corresponding language level. In those cases, the result of the language level test from the Language Center does **NOT** grant an exemption.

* Native speakers are students who have obtained their A-level diploma (secondary school) or equivalent:
 - in an institution where the target language is used as the language of instruction or
 - in a country where the target language is the official language used in the educational system